

End-to-end
SOLUTIONS
for the wind industry



The Kalmar heavy lifters
DRG540A-850A, DRG600Z-1300Z



We've got you **COVERED**

No matter where you are in the world or what you need to move, Kalmar can tailor a solution to meet your exact needs.

Knowledge and experience that counts.

With thousands of machines working hard every day, Kalmar understands that one size doesn't fit all, which is why each of our solutions is specified to meet your exact needs. From moving raw materials and components to the final construction and installation of wind towers, we got you covered, end to end with our tailorable solutions.

A world of possibilities.

Dependent on your specific task, you have a choice of reachstackers that are specifically designed to deliver and move your heaviest and largest loads with ease. You can choose from a wide range of drivelines, power sources, wheelbases, lifting capacities and attachments, all built on our global G-Generation platform, which has been proven and tested in the field across a wide range of applications.

No job too challenging.

Our range of solutions can lift loads from 54 to 130 tonnes, and up to 260 tonnes when two Super Gloria Reachstackers are working in tandem. If your lifting needs are not covered by our current extensive range of attachments, then talk to us about designing a special attachment to meet your specific lifting needs.

Our end-to-end wind handling solutions are ready to handle:

- Production of main components
- Foundations, tripods and monopiles
- Towers, sections, cones and TPS
- Nacelles, bearings and blades
- Generator, gearbox, hub and rotor
- Hydraulic and electric components
- Containerised assembly parts
- Power cable reels.

We can lift, move, stack and store through every touch point.

- Raw material, supplies and storage
- Material supplies in manufacturing
- Semi-finished components
- Blasting and painting
- Loading and unloading for transports
- Marshalling of project cargo
- Containerised assembly parts
- Power cable reels.



Kalmar DRG1300-92ZX with max lift capacity of 130 tonnes (287 klbs) and max lift height of 13 m (42ft), handling all wind turbine components and project cargo.

The Tool Carrier A-RANGE

of industrial reachstackers

A strong and flexible Tool Carrier solution, that can be fitted with grippers, magnets or slings. The A-range reachstackers features:

- Lift capacity (4 Twistlocks): 54 - 85 tonnes (119 - 187 klbs)
- Lift capacity (4 Lift Eyes): 54 - 100 tonnes (119 - 220 klbs)
- Lift height: up to max 15 or 16 m (49ft or 52ft)
- Load centre: up to max 8 or 11 m (26ft or 36ft)
- Designed for multi-tool operations in various combinations
- Tool Carrier with rotation 300-deg and sideshift ±450 mm (±18")
- Twistlocks for quick-change of various sub-attachments
- Lift Eyes for slings, chains or beams or sub-attachments.

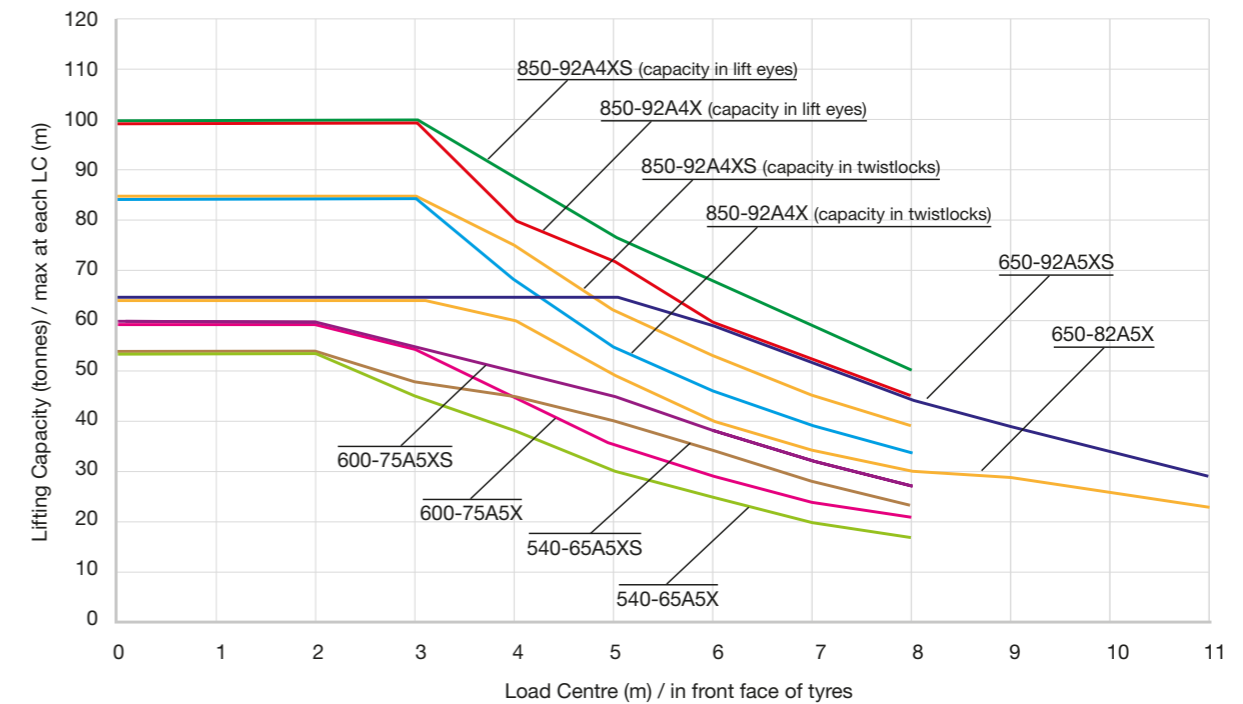


| Models | Wheelbases (m / in) | Diesel | | Electric |
|------------|------------------------|---------|-----|----------|
| | | Premium | Eco | Premium |
| 540-65A5X | 6.50 m (256") | ● | ● | ● |
| 540-65A5XS | 6.50 m (256") | ● | ● | ● |
| 600-75A5X | 7.50 m (295") | ● | ● | ● |
| 600-75A5XS | 7.50 m (295") | ● | ● | ● |
| 650-82A5X | 8.25 m (325") | ● | | |
| 650-92A5XS | 9.25 m (364") | ● | | |
| 850-82A4X | 8.25 m (325") | ● | | |
| 850-92A4XS | 9.25 m (364") | ● | | |

Lifting capacity

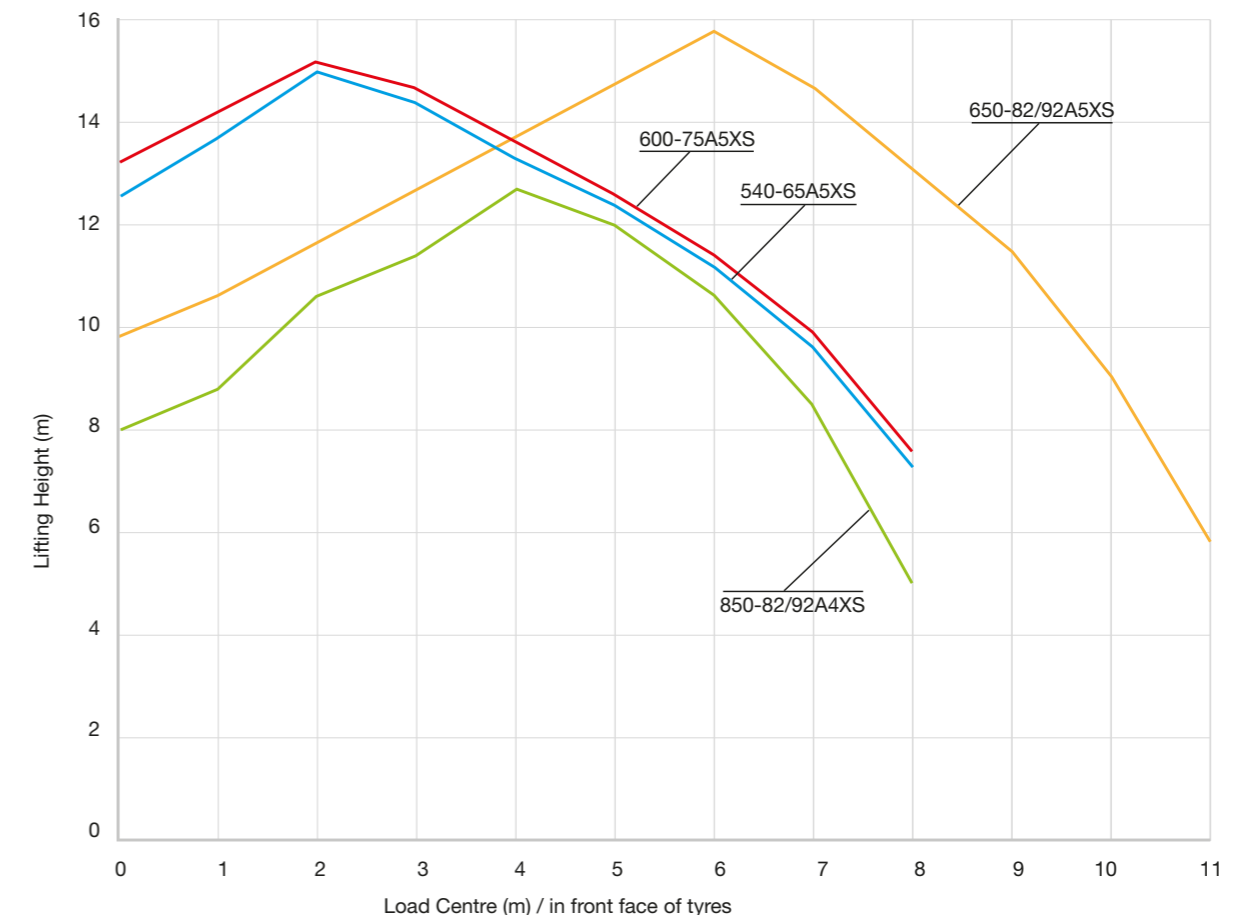
Tool Carrier / A-range

X = capacity without Support Jacks.
XS = capacity with Support Jacks (0 km/h).



Lifting height

Tool Carrier / A-range



| HANDLING | Models | | 540-65A5X | 600-75A5X | 650-82A5X | 850-82A4X | 850-92A4X | |
|--|--|--------------------------|-----------------------|-----------------------|-----------------|-------------------|------------------|------------------|
| | | | 540-65A5XS | 600-75A5XS | 650-92A5XS | 850-82A4XS | 850-92A4XS | |
| Type of handling | Rotating Tool Carrier | | | | | | | |
| Lifting devices | Twistlocks (4x) / Lift Eyes (4x) | | | | | | | |
| Rotation, max | | deg | +195/-105 (300) | | | | | |
| Sideshift, max | | mm | ± 450 | | | | | |
| LIFTING CAPACITY | Lifting type (I) | | Twistlock (4x) | | | | | |
| | Lift capacity, load center L4-L9 | Q1-Q6 | tons | 54-54-38-25-17 | 60-60-45-29-21 | 65-65-60-40-30-26 | 85-85-68-46-34 | 85-85-75-53-39 |
| | Lift capacity, load center L4-L9 (jacks) | Q1-Q6 | tons | 54-54-45-34-23 | 60-60-50-38-27 | 65-65-65-60-45-34 | 85-85-80-60-45 | 85-85-85-68-50 |
| | Load center L4-L9 | | m | 0-2-4-6-8 | 0-2-4-6-8 | 0-2-4-6-8-10 | 0-2-4-6-8 | 0-2-4-6-8 |
| | Lifting height, min-max | H4a | mm | 1500 - 12800 | 1500 - 12800 | 1500 - 15800 | 1500 - 12800 | 1500 - 12800 |
| | DIMENSIONS | Lifting type (II) | | Lift Eyes (4x) | | | | |
| Lift capacity, load center L4-L9 | | Q1-Q6 | tons | 54-54-38-25-17 | 60-60-45-29-21 | 65-65-60-40-30-26 | 100-100-68-46-34 | 100-100-75-53-39 |
| Lift capacity, load center L4-L9 (jacks) | | Q1-Q6 | tons | 54-54-45-34-23 | 60-60-50-38-27 | 65-65-65-60-45-34 | 100-100-80-60-45 | 100-100-89-68-50 |
| Load center L4-L9 | | | m | 0-2-4-6-8 | 0-2-4-6-8 | 0-2-4-6-8-10 | 0-2-4-6-8 | 0-2-4-6-8 |
| Lifting height, min-max | | H4b | mm | 1500 - 12800 | 1500 - 12800 | 1500 - 15800 | 1500 - 12800 | 1500 - 12800 |
| Tyre dimensions, front and rear | | | in | 18.00x33" | 18.00x33" | 21.00x35" | 24.00x35" | 24.00x35" |
| Tumber of tyres, front and rear | | | 4 + 2 | 4 + 2 | 4 + 2 | 4 + 2 | 4 + 2 | |
| Wheelbase | L3 | mm | 6500 | 7500 | 8250 / 9250 | 8250 | 9250 | |
| Truck length (to fork face front) | L | mm | 11300 | 12300 | 14300 / 15300 | 12800 | 13800 | |
| Truck width (over tyres) | B | mm | 4150 | 4150 | 4600 | 4900 | 4900 | |
| Chassis height, max | H3 | mm | 4700 | 4700 | 5250 | 5640 | 5640 | |
| Service weight | | kgs | 74000 | 76000 | 100000 / 102000 | 112000 | 114000 | |

The Lift Hook Z-RANGE

of industrial reachstackers

Designed with forged Lift Hook in single or double version. The Z-range reachstackers feature:

- Lift capacity (Lift Hook): 60 - 130 tonnes (132 - 286 klbs)
- Lift capacity (4 Lift Eyes): 60 - 130 tonnes (132 - 286 klbs)
- Lift height: up to max 13 m (42ft) / optional up to max 16 m (52ft)
- Load centre: up to max 8 m (26ft)
- Lift Hook / Lift Eyes for slings, chains or beams or sub-attachments
- Lift Hook with free rotation 360-deg (non-power) / no sideshift
- Lift Eyes without rotation (fixed) / no sideshift.

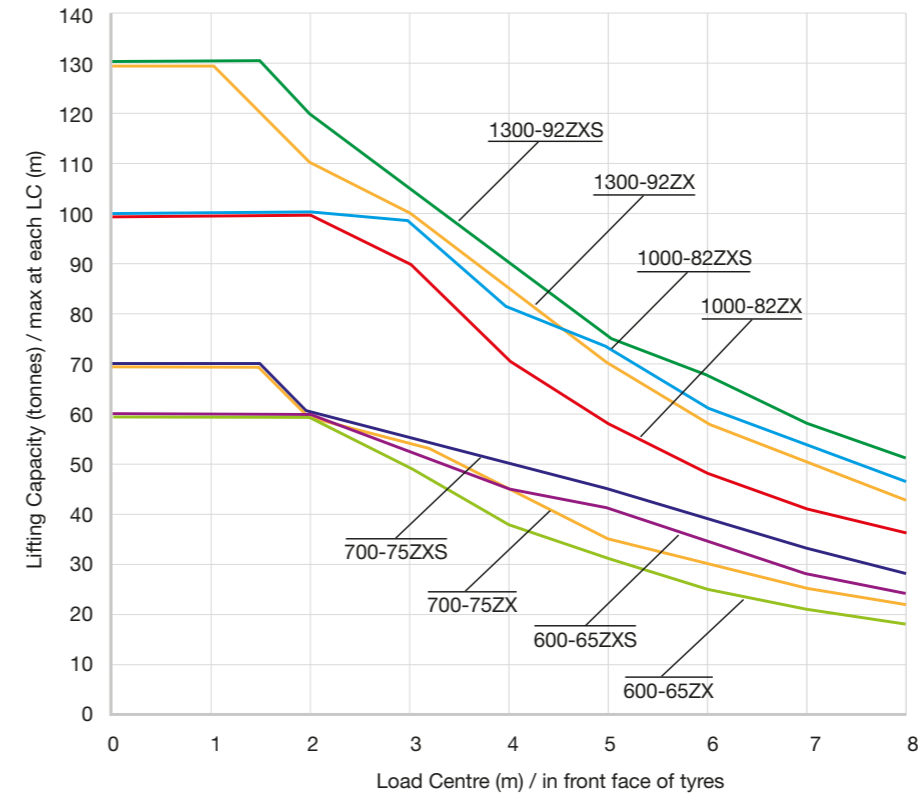


| Models | Wheelbases (m / in) | Diesel | | Electric |
|------------|------------------------|---------|-----|----------|
| | | Premium | Eco | Premium |
| 600-65ZX | 6.50 m (256") | ● | ● | ● |
| 600-65ZXS | 6.50 m (256") | ● | ● | ● |
| 700-75ZX | 7.50 m (295") | ● | ● | ● |
| 700-75ZXS | 7.50 m (295") | ● | ● | ● |
| 1000-82ZX | 8.25 m (325") | ● | | |
| 1000-82ZXS | 8.25 m (325") | ● | | |
| 1300-92ZX | 9.25 m (364") | ● | | |
| 1300-92ZXS | 9.25 m (364") | ● | | |

| HANDLING | Models | 600-65ZX | | | | 700-75ZX | | | | 1000-82ZX | | | | 1300-92ZX | | | | | | |
|--|--|---------------------------------|----------------|---------------------------|-----------------------------|------------------|------------------|--|--|------------|--|--|--|------------|--|--|--|--|--|--|
| | | 600-65ZXS | | | | 700-75ZXS | | | | 1000-82ZXS | | | | 1300-92ZXS | | | | | | |
| Type of handling | | Rotating Lift Hook | | | | | | | | | | | | | | | | | | |
| Lifting devices | | Lift Hook (1x) / Lift Eyes (4x) | | | | | | | | | | | | | | | | | | |
| Rotation, max | | deg | | Endless (360) / Fixed (0) | | | | | | | | | | | | | | | | |
| Sideshift, max | | mm | | N.A. | | | | | | | | | | | | | | | | |
| LIFTING CAPACITY | Lifting type (I) | | tons | | Lift Hook (1x) | | | | | | | | | | | | | | | |
| | Lift capacity, load center L4-L9 | Q1-Q6 | tons | 60-60-38-25-18 | 70-60-45-30-22 | 100-100-70-48-36 | 130-110-85-58-43 | | | | | | | | | | | | | |
| | Lift capacity, load center L4-L9 (jacks) | Q1-Q6 | tons | 60-60-45-34-24 | 70-90-50-39-28 | 100-100-81-61-46 | 130-120-90-68-51 | | | | | | | | | | | | | |
| | Load center L4-L9 | | m | 0-2-4-6-8 | 0-2-4-6-8 | 0-2-4-6-8 | 0-2-4-6-8 | | | | | | | | | | | | | |
| | Lifting height, min-max | H4a | mm | 1500 - 12800 | 1500 - 12800 | 1800 - 12800 | 1800 - 12800 | | | | | | | | | | | | | |
| | Lifting type (II) | | tons | | Fixed Lift Eyes (4x) | | | | | | | | | | | | | | | |
| Lift capacity, load center L4-L9 | Q1-Q6 | tons | 60-60-38-25-18 | 70-60-45-30-22 | 100-100-70-48-36 | 130-110-85-58-43 | | | | | | | | | | | | | | |
| Lift capacity, load center L4-L9 (jacks) | Q1-Q6 | tons | 60-60-45-34-24 | 70-90-50-39-28 | 100-100-81-61-46 | 130-120-90-68-51 | | | | | | | | | | | | | | |
| Load center L4-L9 | | m | 0-2-4-6-8 | 0-2-4-6-8 | 0-2-4-6-8 | 0-2-4-6-8 | | | | | | | | | | | | | | |
| Lifting height, min-max | H4b | mm | 1500 - 13800 | 1500 - 13800 | 1800 - 13700 | 1800 - 13700 | | | | | | | | | | | | | | |
| DIMENSIONS | Tyre dimensions, front and rear | | in | 18.00x33" | 18.00x33" | 24.00x35" | 24.00x35" | | | | | | | | | | | | | |
| | Tumber of tyres, front and rear | | | 4 + 2 | 4 + 2 | 4 + 2 | 4 + 2 | | | | | | | | | | | | | |
| | Wheelbase | L3 | mm | 6500 | 7500 | 8250 | 9250 | | | | | | | | | | | | | |
| | Truck length (to fork face front) | L | mm | 11300 | 12300 | 12800 | 13800 | | | | | | | | | | | | | |
| | Truck width (over tires) | B | mm | 4150 | 4150 | 4900 | 4900 | | | | | | | | | | | | | |
| | Chassis height, max | H3 | mm | 4700 | 4700 | 5640 | 5640 | | | | | | | | | | | | | |
| | Service weight | | kgs | 74000 | 76000 | 112000 | 114000 | | | | | | | | | | | | | |

Lifting capacity

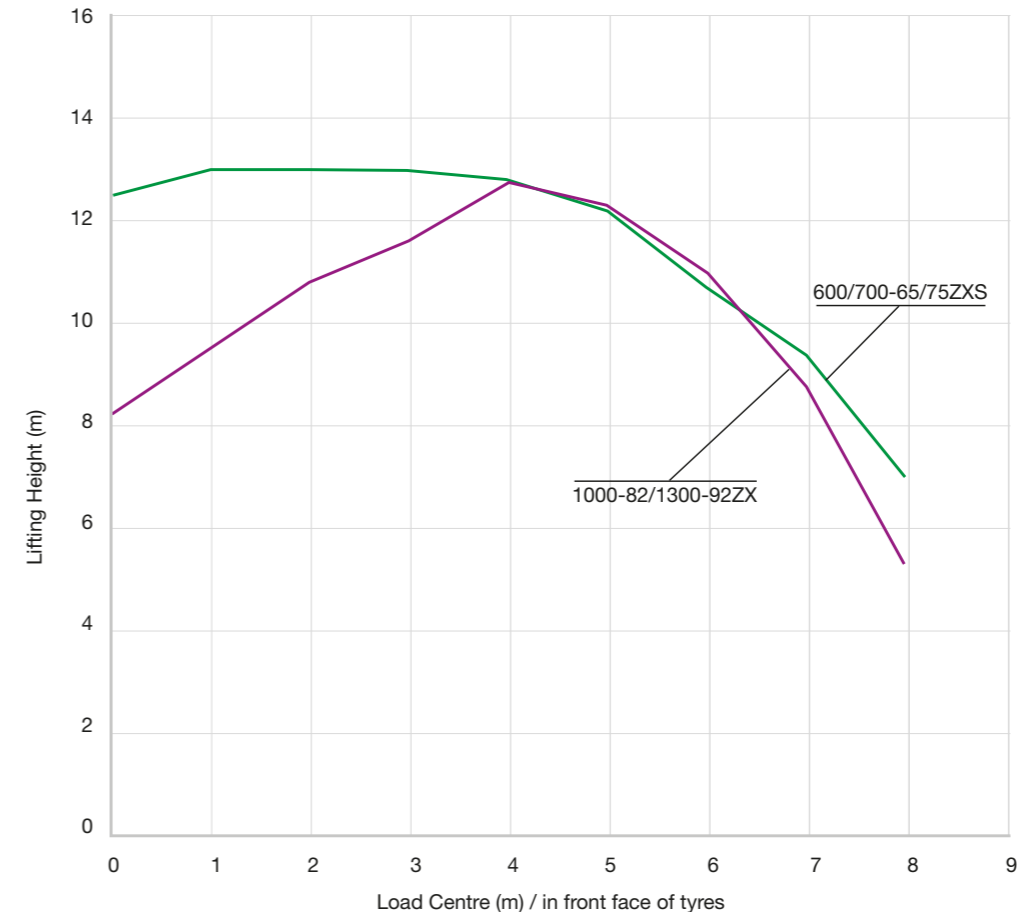
Lift Hook - Lift Eyes / Z-range



X = capacity without Support Jacks.
XS = capacity with Support Jacks (0 km/h).

Lifting height

Lift Hook - Lift Eyes / Z-range





KALMAR

Making your every move count

Published by Kalmar, part of Cargotec. Copyright © Cargotec 2024. All rights reserved. No part of this publication may be copied or reproduced without permission of the copyright owner. The content of this document is provided "as is", without warranties of any kind with regards to its accuracy or reliability and excluding all implied warranties. We reserve the rights to make changes to any of the items described in this document without prior notice. The content of each service and availability of particular services may vary.

www.kalmarglobal.com